

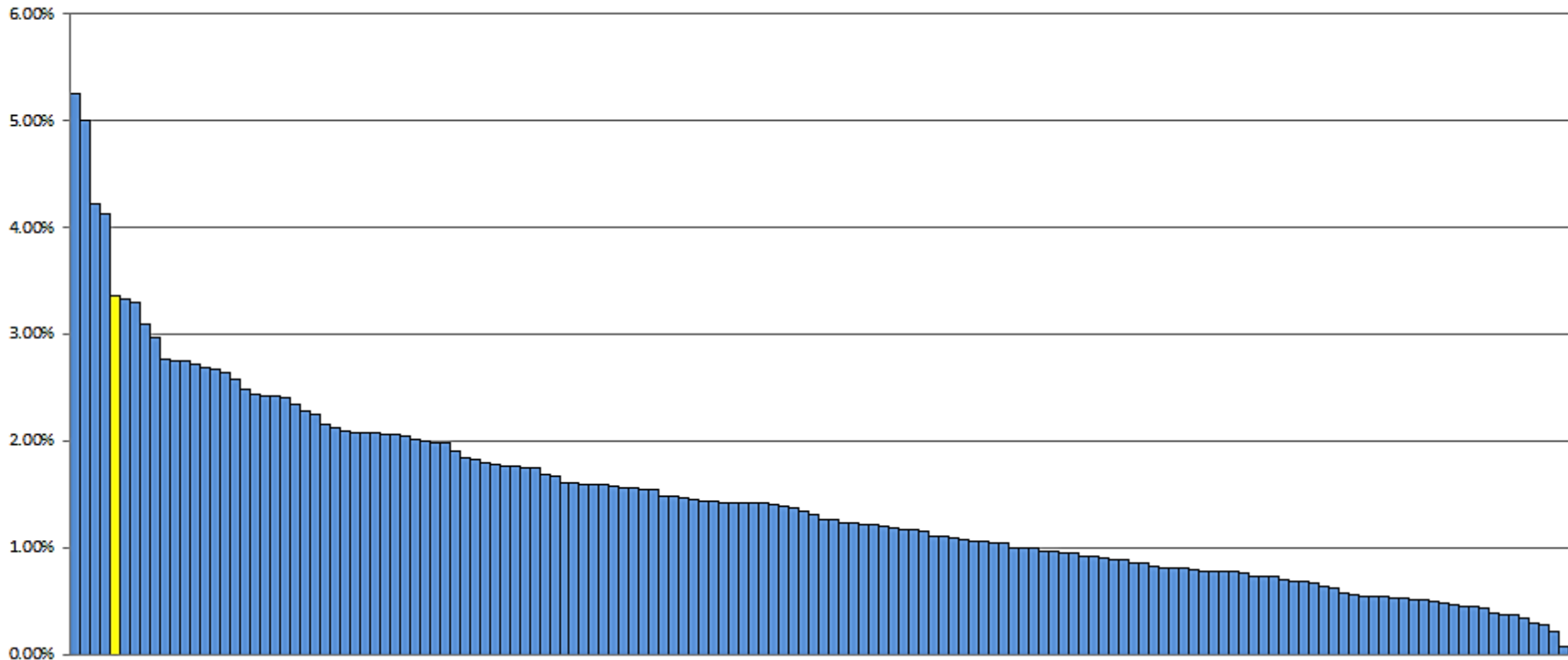
AI (Artificial Ian)

By Simon Philpott

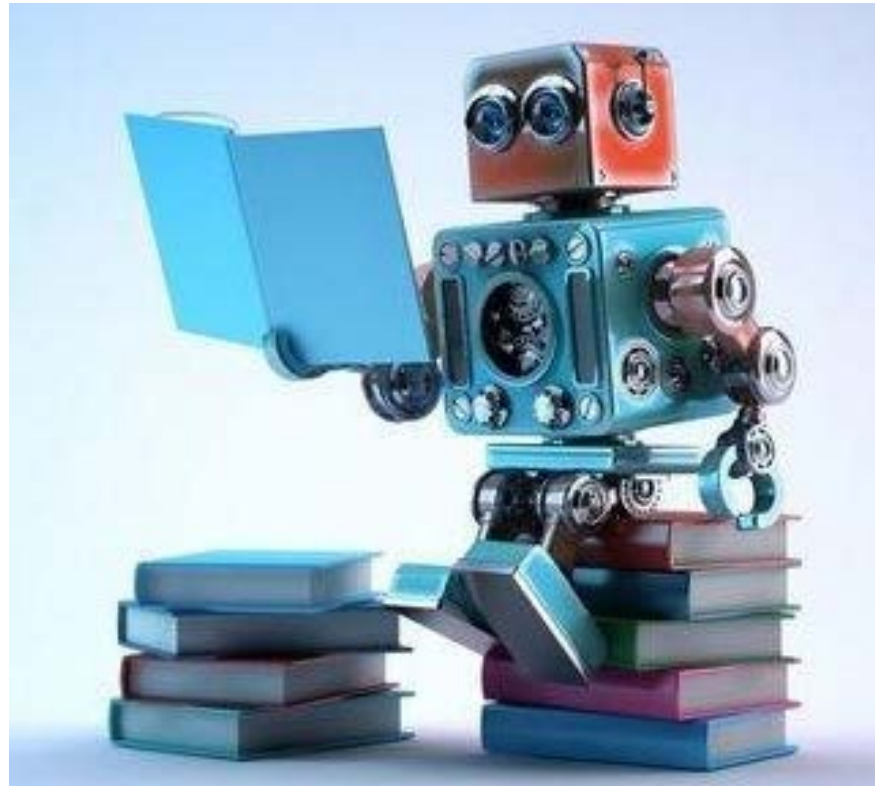


Why?

2018/19 Q1 Cancelled Ops as % of Elective FFCs



Modelling



Artificial Intelligence

Key Questions:

Should I cancel a Patient today?

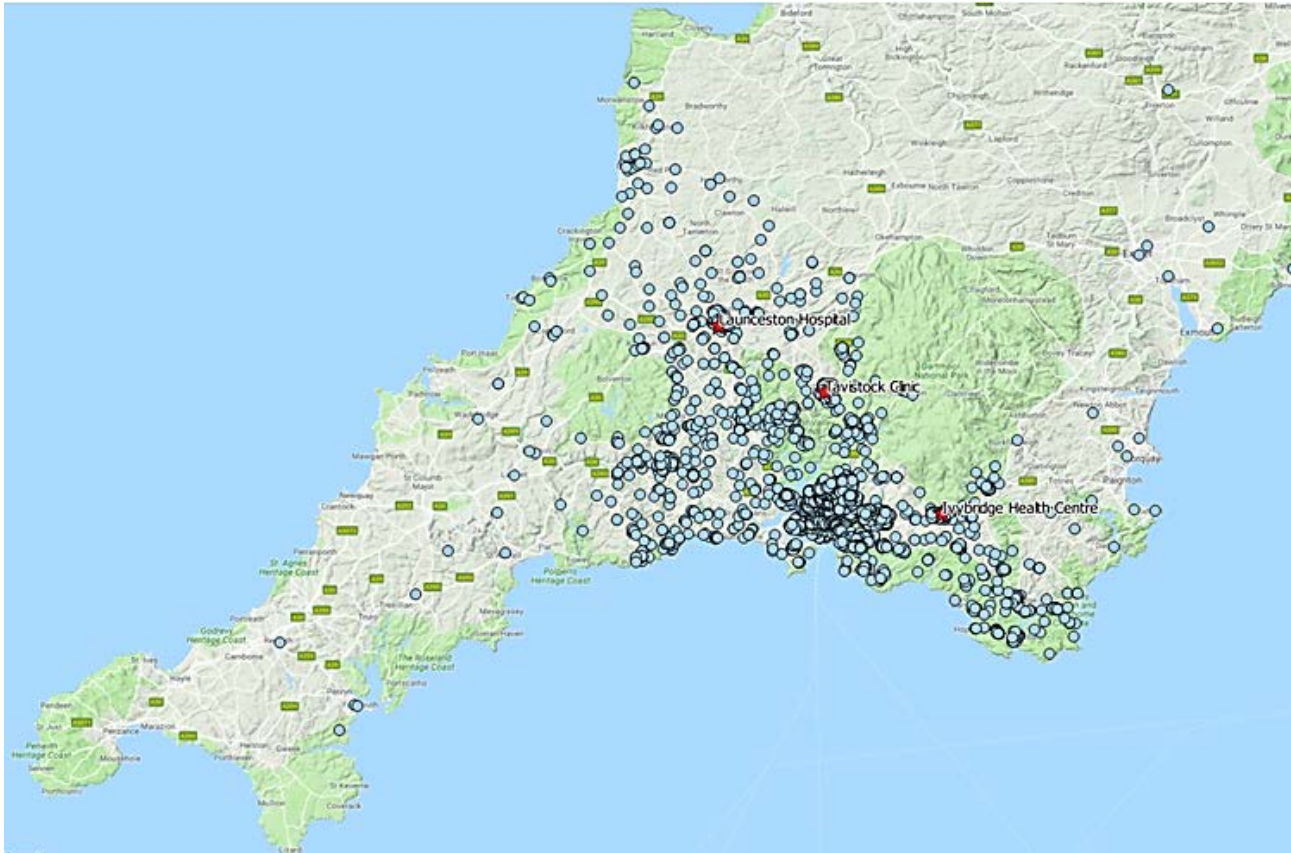
How many Patients should I cancel?

Which Patient/s should I cancel?



QGIS

QGIS - Free and Open Source Geographic Information System



HSMA Program

Personal development

Access to experts

Excellent learning environment

Exposure to multiple modelling techniques

Signposting and teaching of FREE open source tools

Support changes to services to benefit Patients

